

\$540,000 - Nw-8-41-1-5 Highway 20, Rural Lacombe County

MLS® #A1119740

\$540,000

0 Bedroom, 0.00 Bathroom,
Land on 88.00 Acres

NONE, Rural Lacombe County, Alberta

GOLDEN OPPORTUNITY TO OWN A RIVERFRONT PROPERTY - 87.75 +/- acres of prime agricultural land NW of Bentley on pavement. Gorgeous building sites for your dream home. 20 min to Lacombe and 35 mins to Red Deer. 70.52 +/- acres arable hay land, 10.75 +/- acres native/recreation land and 6.48 +/- acres riverbank. Don't miss this chance of a lifetime. There is an easement, along the south boundary, registered on title to give access to SW-8-41-1-5.

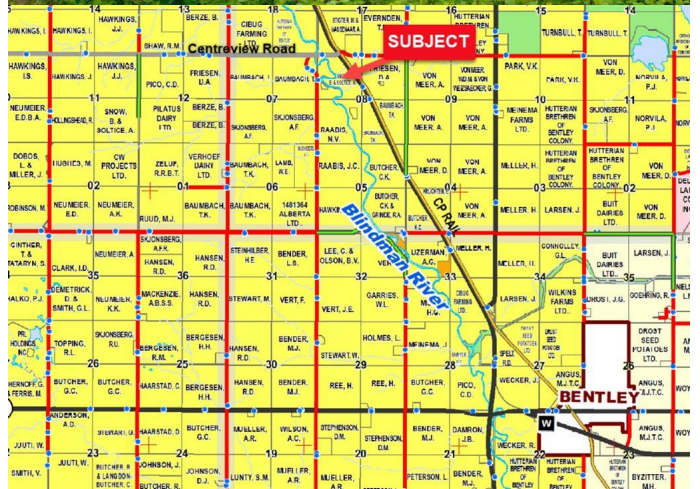
Essential Information

MLS® #	A1119740
Price	\$540,000
Bathrooms	0.00
Acres	88.00
Type	Land
Sub-Type	Commercial Land
Status	Active

Community Information

Address	Nw-8-41-1-5 Highway 20
Subdivision	NONE
City	Rural Lacombe County
County	Lacombe County
Province	Alberta
Postal Code	T0C 0J0

Amenities



Is Waterfront	Yes
Waterfront	River Front

Exterior

Lot Description	Waterfront
-----------------	------------

Additional Information

Date Listed	June 14th, 2021
-------------	-----------------

Days on Market	129
----------------	-----

Zoning	AG
--------	----

Listing Details

Listing Office	Coldwell Banker Ontrack Realty
----------------	--------------------------------

Data is supplied by Pillar 9â„¢ MLSÂ® System. Pillar 9â„¢ is the owner of the copyright in its MLSÂ® System. Data is deemed reliable but is not guaranteed accurate by Pillar 9â„¢. The trademarks MLSÂ®, Multiple Listing ServiceÂ® and the associated logos are owned by The Canadian Real Estate Association (CREA) and identify the quality of services provided by real estate professionals who are members of CREA. Used under license.